



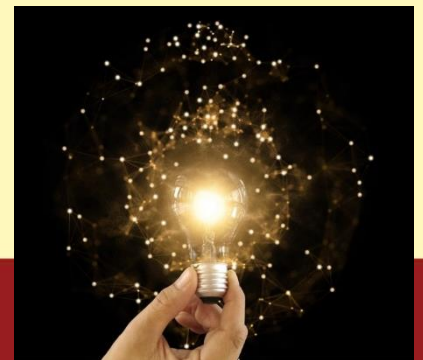
Post Secondary Pathways



To nurture BBSSians to be self-directed learners with abundance mentality

Agenda

Item	Action By	Duration
Welcome Address	Mdm Mabel Chia	10 mins
Presentation by ITE Personnel	Ms Ng Ru Yan	30 mins
Subject Selection Briefing	Mr Syam Lal	15 mins



Learn for Life

Equipping ourselves for a changing world



The question I've been asked the most is: what can I do to better prepare for a more uncertain, turbulent and volatile future?

*In such a world, what is more important is the ability to learn how to learn – to **keep on learning and re-learning, and to enjoy doing so...***

~ Educator Minister Lawrence Wong, COS 2021

Key to Preparing Our Children for the Future

- Lay foundation in school by being engaged in all learning
- No single “right” or “ideal” course or subject that offers head-start. Consider own strengths and interests

Post-Secondary Pathways

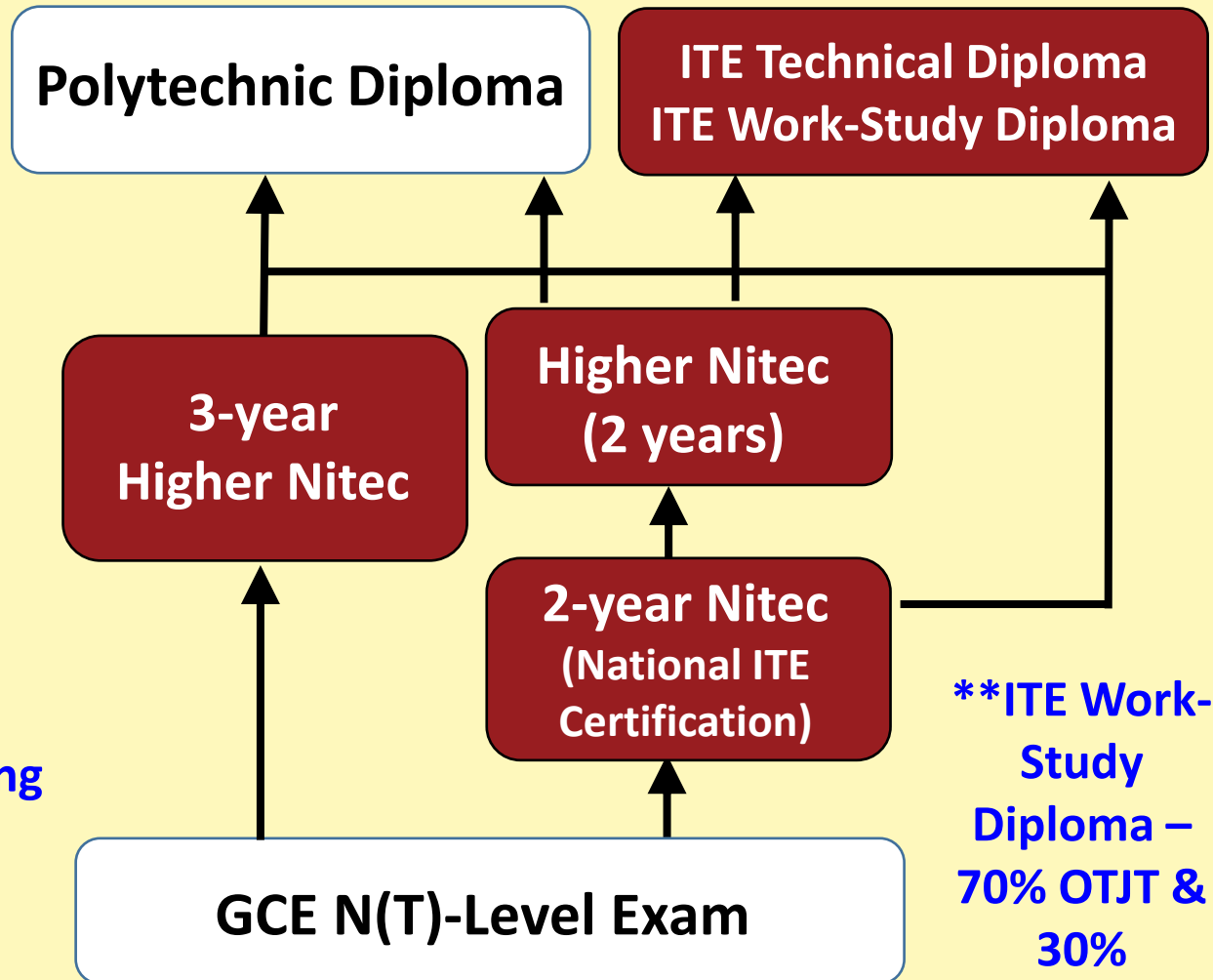


Students could enter work at any point after NITEC or Higher NITEC

3 Technical Diploma

- Culinary Arts
- Automotive Engineering
- Hospitality & hotel Management

**Opportunities for student exchanges & industrial attachments



**ITE Work-Study Diploma – 70% OTJT & 30% classroom learning

Institute of Technical Education (ITE)

[YouTube Video “Skilling the Future” \(0:00 – 3:50\)](#)

<https://www.youtube.com/watch?v=ecsy1sV7zA4>



To nurture BBSSians to be self-directed learners with abundance mentality

Institute of Technical Education (ITE)

ITE Nitec prepares students for a **fulfilling career**



Hands-On Learning



Relevant Course to Economy



Partners Industry Players



Institute of Technical Education (ITE)



ITE College West (CCK)

- College of Service & innovation



ITE College Central (AMK)

- College of Creativity and Innovation



ITE College East (Simei)

- College of Enterprise and Innovation

ITE Early Admission Exercise (EAE)

Allows you to apply and receive a conditional offer for admission to ITE courses based on your

- Aptitude
- Strength
- Interest

Before taking your GCE N Level exams

Our Alumni in University

Shawn Ong Guo Yong (BBSS, 2006 – 2009)

- Posted to ITE College West 2010 - 2011 (Digital audio and video production)
- Singapore Poly 2012 -2015 (Visual effects and motion graphics); Gold Award Winner
- Started course at Nanyang Technological University in 2018



Our Alumni in University

Ho Shu Hao Darren, 4T1 (2010)

- Graduated from Republic Polytechnic with Diploma in Business Information Systems
- Won the Module Awards for IT in Business Process and in Management Information Systems by Republic Polytechnic
- GPA of 3.8 and was placed 2nd in his course.
- Reading Computer Science at NTU since 2019.



Our Alumni in University

Javen Koh Wei Yang (BBSS, 2016 – 2019)

- Posted ITE College Central, Business Admin Course
- Scored 5As in 2019 N-level Exam, and obtained Platinum Award for CPA Competition by MOE
- Recipient of **the Lee Kuan Yew Model Student Award 2022 in ITE**, with Grade Point Average score of 4.0
- President of ITE College Central's Rotaract Club - Set up a Youth Wing at Lions Befrienders, to bring together like-minded youths with a passion in volunteering
- Currently pursuing a **Diploma in Maritime Business** at Singapore Polytechnic.



Achievements by our Alumni

Vernice Tan Si Ying (BBSS, 2015 – 2018)

- YL EXCO member, President of One Earth Club in BBSS
- ITE College West, Beauty & Wellness Course.
- Selected to represent ITE to take part in World Skills Competition.



Conclusion

*“... what is more important is the ability to learn how to learn – to **keep on learning and re-learning, and to enjoy doing so...**”*

Important Attitudes

- Be Your Best
- Perseverance



Presentation By ITE

Ms Ng Ru Yan





Subject Selection Briefing by Lead Teacher Mr Syam Lal



To nurture BBSSians to be self-directed learners with abundance mentality

Subject Combination & Selection Criteria

3A1 Subjects (6 Subjects)

English

Basic MTL

Mathematics

Science

Computer Applications

Design and Technology Or Elements of
Business Skills



Criteria

Criteria for Elements of Business Skills:

At least 60% marks for English (overall marks)

Criteria for Design and Technology:

At least 60% marks for D&T (overall marks)



Design & Technology

- **Personal Traits**
 - Enjoys design-and-make activities.
 - Possesses curiosity in creating solutions to problems.
- **Content**
 - Design
 - Visualise, explore, develop, present and communicate ideas
 - Technological Areas
 - Basic electricity and electronics and simple mechanisms
 - Materials and Practical Processes
 - Using tools, equipment and machines to create a final end product

Design & Technology

- **Assessment**

Paper 1 – Written (30%)

- 5 questions based mainly on Technological areas
- 2 out of 3 questions on Design and Technological areas

Paper 2 – Design Project (70%)

- Design journal consisting of reflection of the design process
- Final presentation through presentation boards and prototype

- **Relevant Courses / Jobs**

- Design, Science-based, technology courses
- Mechanical design engineer, product designer, sales engineer



Elements of Business Skills (EBS)

- **Personal Traits**

- Interested business activities particularly in travel and tourism, hospitality and retail.
- Able to analyze situations and provide appropriate responses

- **Content**

- Business Activities in Selected Service Industries
 - Travel and tourism
 - Hospitality (accommodation and food & beverage)
 - Retail
- Basic Marketing
 - Marketing mix
- Customer Relations
 - Selling process
 - Quality service

Elements of Business Skills

- **Assessment**

Paper 1 – Written (60%)

- 4 to 5 short-response and structured questions

Paper 2 – Coursework (40%)

- 20-hour of in-class research on a business in one of the 3 service industries.

- **Relevant Courses / Jobs**

- Hospitality
- Travel and tourism
- Retail
- Other Business-related courses



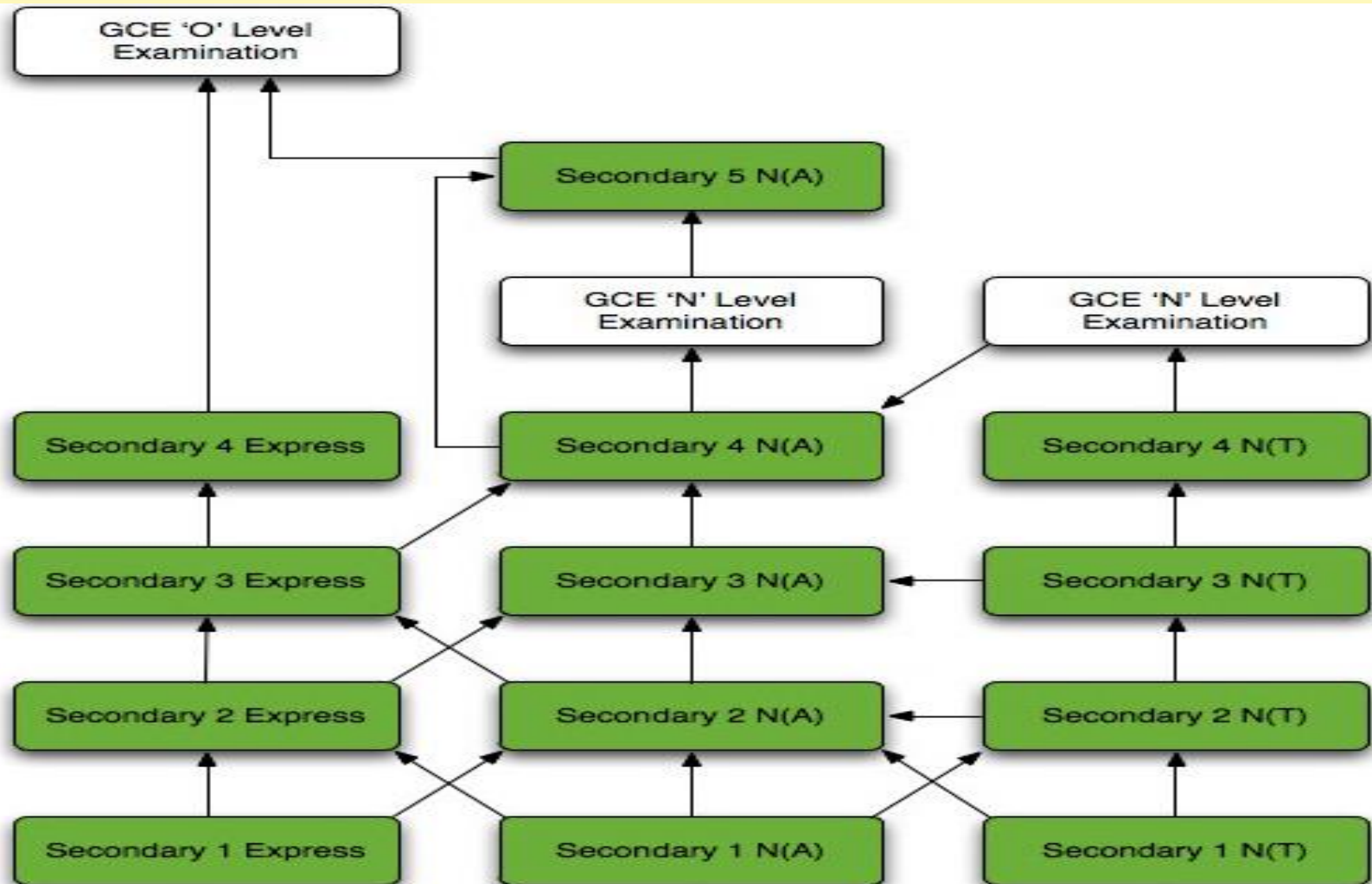
Promotion Criteria

From Sec 2NT to Sec 3NT:

Pass in 2 subjects;
one of which must be **English**
or **Mathematics.**



Promotion Pathways



Normal Technical Options

Possible entry points into N(A) stream :

- At Sec 1N(T) to Sec 2N(A)
- Sec 2N(T) to Sec 2N(A)
- Sec 3N(T) to Sec 3N(A)
- Sec 4N(T) to Sec 4N(A)

Normal (Technical) Journey

S1NT

S4NT

- “After N-Level
- a) enter ITE
 - b) laterally transfer to **S4N(A)** if students do well

SBB Criteria for Sec 3



From Sec 2NT to Sec 3NT:

50% in SBB subject

**to continue studying the subject at
NA or Exp levels**



Important Dates

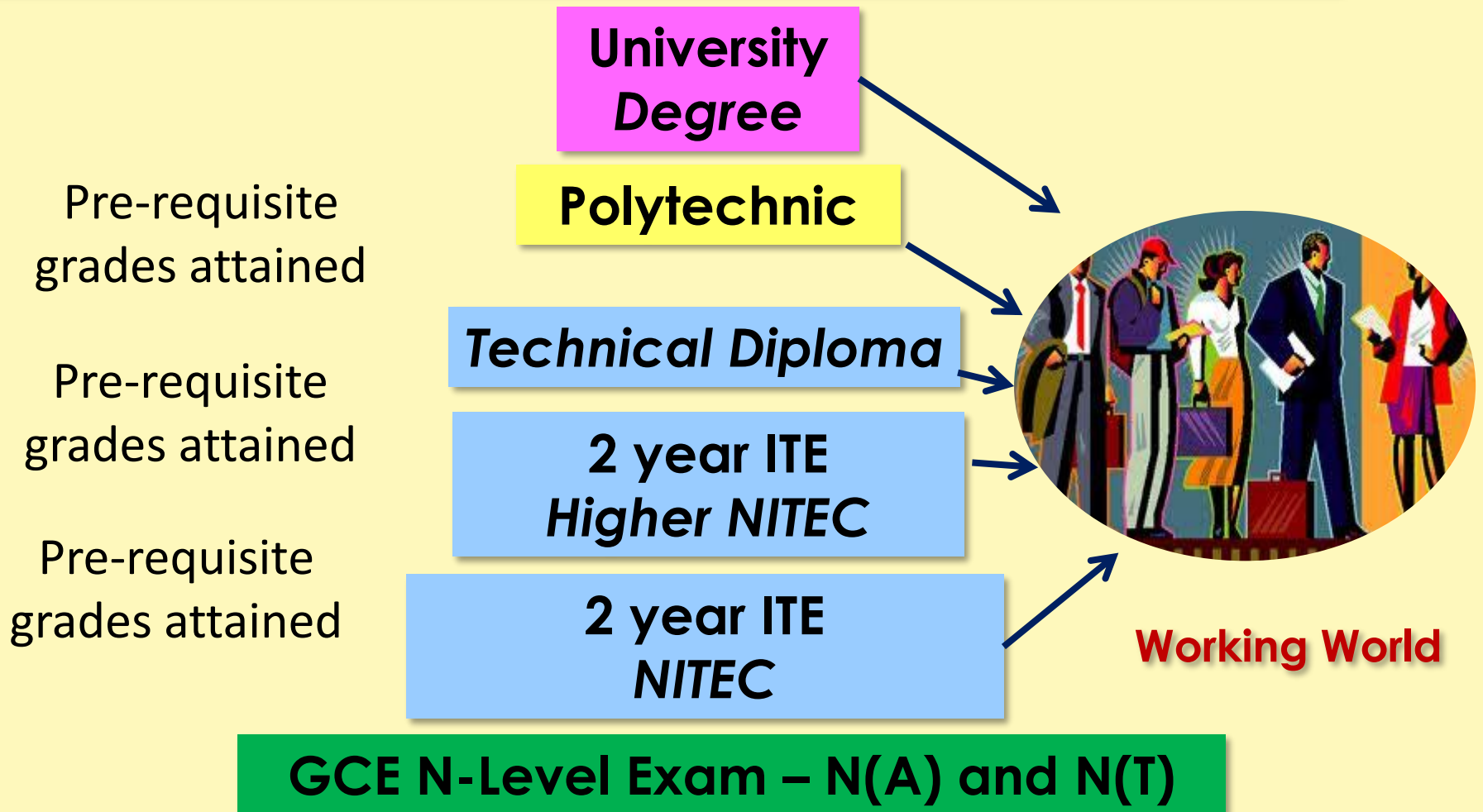
Dates	Event
14 Feb	Experience ITE Programme
27 – 29 Mar	Elective Module A at ITE
23 Oct 	Subject Selection Exercise (Online Submission)
27 Oct 	Release of Results of Subject Selection

Key Messages for Students in preparation for post secondary courses at ITE

- **Exploration of interests and development of aptitudes**
 - Elective Modules
 - CCAs / School / Personal activities, achievements, projects
 - Work attachments; community/volunteer work
- **Research on ITE courses and related jobs**
 - ITE's website
 - Career Services Centre (CSC) at ITE Colleges
 - Teachers, ECG Counsellors, family/relatives
- **Preparation for application and assessment**
 - Preparation of write-ups
 - Request for testimonials, CCA record, references
 - Brushing up on interview techniques
 - Preparation of portfolio (where relevant)



Recap: Pathways available for NT Students



The Right Approach

- Healthy Mind & Body - importance of balanced diet, exercise & sleep/rest
- Good Time Management - make time for studies/homework & leisure activities
- Take ownership of your own learning - your teachers are your guides, cooperate with them



Secondary 2 Subject Selection Information



Kindly access the following link or scan the QR code and provide us with your questions about subject selection if you have. Thank you!

<https://for.edu.sg/sec2ptalk2023>

